

Subordinating Conjunctions:

What Is a Subordinating Conjunction?



Getting Started

What is a conjunction?

A conjunction links two or more words, phrases or clauses together.

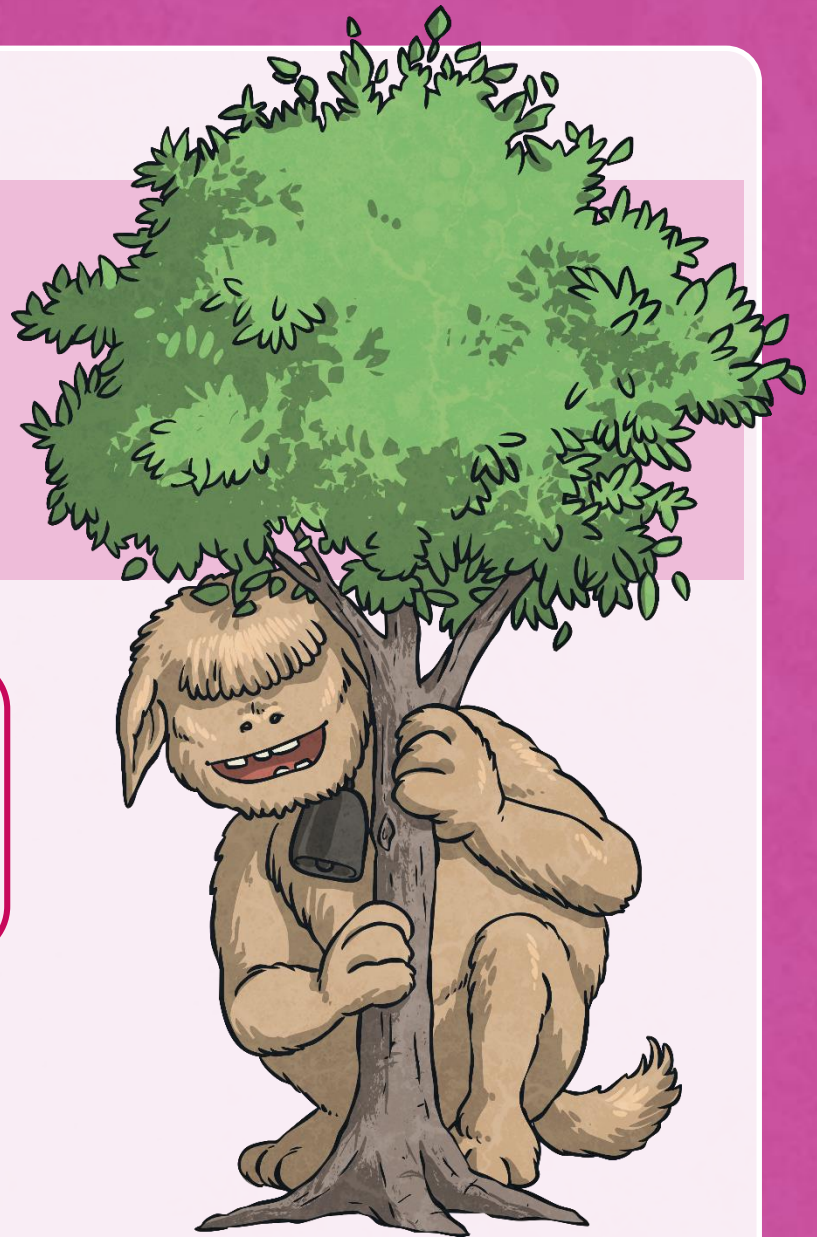
There are **two** main types of conjunctions we use within sentences.

Do you know what they both are?

- **co-ordinating conjunctions** (*e.g. and*) link two main clauses together as an equal pair to create a compound sentence. We usually remember these words using the acronym 'FANBOYS'.
- **subordinating conjunctions** (*e.g. when*) introduce a subordinate clause. You can remember some of the most useful subordinating conjunctions by...

...spotting one of the rarest monsters on the planet, a wabub, and shouting...

**I SAW A
WABUB!**



I Saw a Wabub...

...is an acronym to help you remember the first letters of some of the most important subordinating conjunctions.

If

Since

As

When

Although

While

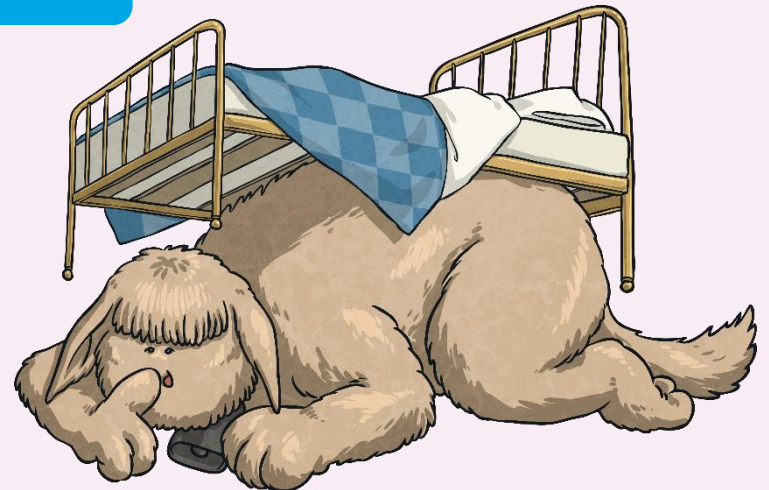
After

Before

Until

Because

I SAW A WABUB!



Next Steps

So, how do we use subordinating conjunctions?

Subordinating conjunctions are the first words within a subordinate clause. Subordinate clauses do not make sense on their own but, when they are used with a main clause, they create a complex (multi-clause) sentence.

Subordinate clauses will always have a subject and verb within them, e.g.

after she smiled



subordinating
conjunction



subject



verb

is a subordinate clause

after Christmas



Here 'after' is being
used as a preposition.

is not a subordinate clause



Next Steps

I SAW A
WABUB!



Can you spot the **subordinate clause** and the **subordinating conjunction** in this sentence?

**The eager pupils sped into school
when the bell rang.**



Next Steps

I SAW A
WABUB!



Can you spot the **subordinate clause** and the **subordinating conjunction** in this sentence?

The eager pupils sped into school
when the bell rang.



Next Steps

I SAW A
WABUB!



Can you spot the **subordinate clause** and the **subordinating conjunction** in this sentence?

**Whales give birth to live young
as they are mammals.**





Next Steps

I SAW A
WABUB!



Can you spot the **subordinate clause** and the **subordinating conjunction** in this sentence?

Whales give birth to live young
as they are mammals.





Next Steps

I SAW A
WABUB!



Can you spot the **subordinate clause** and the **subordinating conjunction** in this sentence?

The hopeless rugby team lost the game because they hadn't trained.





Next Steps

I SAW A
WABUB!



Can you spot the **subordinate clause** and the **subordinating conjunction** in this sentence?

The hopeless rugby team lost the game **because** they hadn't trained.





Next Steps

I SAW A
WABUB!



In the sentences we have looked at so far, the subordinate clause has always come after the main clause but watch...

The eager pupils sped into school
when the bell rang.

When the bell rang, the eager
pupils sped into school.



Next Steps

I SAW A
WABUB!



When the bell rang, the eager pupils sped into school.

Subordinating conjunctions can also be used as the first word in a sentence. When the subordinate clause comes before the main clause, make sure you remember to use a comma to mark where the subordinate clause ends.



Next Steps

I SAW A
WABUB!



Can you swap these sentences around so that the subordinate clause comes before the main clause?
Don't forget your commas!

Whales give birth to live young
as they are mammals.



Next Steps

I SAW A
WABUB!



Can you swap these sentences around so that the subordinate clause comes before the main clause?
Don't forget your commas!

Whales give birth to live young
as they are mammals.

As they are mammals, whales
give birth to live young.



Subordinating Conjunction Hunt

I SAW A
WABUB!



Can you spot the subordinating conjunctions in this piece of text? Where have they been used in these sentences?

As he walked closer, Cleo could see the crocodilius in the cave entrance. The beast was hurriedly eating the remains of its last unlucky victim because it was ravenous. Cleo examined its bright red eyes, huge smoking nostrils and razor-sharp teeth while the beast was occupied. Although Cleo was standing quite a distance away, the terrible stench of the gruesome beast was still making him feel nauseous. Cleo took a deep breath before he tiptoed bravely forward. It was time for battle.

Activate Wi
Go to Settings f



Subordinating Conjunction Hunt

I SAW A
WABUB!



Can you spot the subordinating conjunctions in this piece of text? Where have they been used in these sentences?

As he walked closer, Cleo could see the crocodilius in the cave entrance.

The beast was hurriedly eating the remains of its last unlucky victim

because it was ravenous. Cleo examined its bright red eyes, huge smoking nostrils and razor-sharp teeth **while** the beast was occupied.

Although Cleo was standing quite a distance away, the terrible stench of the gruesome beast was still making him feel nauseous. Cleo took a deep breath **before** he tiptoed bravely forward. It was time for battle.



Practise Your Skills

I SAW A
WABUB!



Now, it's your turn.

Which subordinating conjunction would fit best at the start of this subordinate clause?

Is there more than one possibility?

I am sending you a letter _____
I am your biggest fan.



Practise Your Skills

I SAW A
WABUB!



Now, it's your turn.

Which subordinating conjunction would fit best at the start of this subordinate clause?

Is there more than one possibility?

_____ I eat lunch, I am going to an important meeting.



Practise Your Skills

I SAW A
WABUB!



Now, it's your turn.

Which subordinating conjunction would fit best at the start of this subordinate clause?

Is there more than one possibility?

The two chemicals should cause a reaction _____ you have used them in the right quantities.